



EXECUTIVE MASTER OF PUBLIC ADMINISTRATION



Columbia SIPA's Executive MPA (EMPA) positions midcareer professionals to advance their careers in the public, nonprofit, and private sectors without sacrificing work and life commitments.

The EMPA curriculum focuses on the core analytical and management skills shared by all SIPA master's programs on a schedule that is designed by our students around their careers. Students build on these core skills and deepen their policy knowledge with a focus on one of five concentrations—Management and Innovation, International Economic Policy, Global Policy Studies, Urban and Social Policy, and Environmental Policy and Sustainability Management. EMPA students also have access to an exciting set of programs designed in collaboration with SIPA alumni and may participate in a variety of events (lectures, conferences, seminars, film series) that are part of day-to-day life at one of the world's leading public policy schools.

EMPA students may complete the degree in either two or three years of study, depending on the course load they wish to carry.





CURRICULUM

Classes are offered on Saturdays and weeknights in the fall and spring semesters. During the summer, a full semester is offered from mid-May through late July, when classes meet on weeknights.

The core curriculum provides the professional skills needed to analyze and understand the formulation and management of public policy, including memo writing, oral briefings, group process and team building, and several forms of financial analysis. These tools have been added to more traditional courses such as organizational analysis, budgeting, financial management, probability theory, applied regression analysis, and applied microeconomics. Students must complete the six classes that comprise the core curriculum, followed by concentration courses, usually in the second year.

Advanced Standing for Professional Experience

EMPA students are required to complete a total of 54 credits. Students with two or more years of full-time professional or management experience may apply for credits to be awarded for full-time professional or management work experience. In no case will more than nine credits be awarded. Decisions about the number of credits to be awarded are based on the quality and the length of experience.

Advanced Standing for a Prior Graduate Degree

Students who have completed a master's degree at another university (before enrolling in the EMPA program) may apply to transfer up to two courses (six credits) toward the EMPA degree. The number of credits granted for work completed in another graduate program is determined by assessment of the quality and the relevance of the coursework.

CONCENTRATIONS

Management and Innovation

This is a broad and flexible concentration that affords students the skills to address a collection of complex management and leadership issues facing the world's managers today. Students focus on issues surrounding human and resource management, communications, operations, and ethics and corporate social responsibility while also learning to use management tools such as total quality management, reengineering, benchmarking, strategic planning, electronic communication and commerce, performance management, and team management.

Required Concentration Courses

(students must take four of the following)

- Communicating in Organizations
- Decision Models and Management
- Ethics for Public Leadership
- Operations Management
- Strategic Corporate Social Responsibility
- Strategic Management of Information and Communication Technologies for the Public Good
- Organizational Behavior

International Economic Policy

The International Economic Policy concentration focuses on the policy-relevant knowledge and the analytical and problem-solving skills needed to assume leadership roles in the areas of international trade, development, international finance and monetary policy, and capital markets.

Required Concentration Courses

(students must take four of the following)

- International Trade and Development
- International Finance and Monetary Policy
- International Political Economy
- Economic Setting of Public Policy
- Political Economy Seminar
- International Capital Markets



Global Policy Studies

This concentration provides students with the interdisciplinary content knowledge and analytical and problem-solving skills needed for a successful career in the global political and social arenas. It offers students an understanding of the policy challenges and opportunities in the areas of international politics and cooperation, the United Nations, development, the environment, and demographic and social issues.

Required Concentration Courses

(students must take four of the following)

- Issues in Contemporary Security and Policymaking
- International Political Economy
- International Relations: Theories and Concepts
- Global Environmental Markets
- Comparative Foreign Policy
- The United Nations and Development
- The United Nations and Human Rights
- Comparative Social Welfare Policy
- Cities in a Globalizing World
- Political Economy Seminar

Urban and Social Policy

This is an interdisciplinary concentration that provides students with the content knowledge and analytical and problem-solving skills needed for a successful career in urban policy and/or social policy. Students gain an understanding of the policy challenges and opportunities that are particular to cities in fields such as management, land use, affordable housing, public education, transit, sustainability, and business development. This concentration also equips students to formulate, implement, and evaluate social policies in both the developed and developing worlds and provides multiple perspectives on social investment schemes that increase access to economic and educational opportunities and manage unemployment, poverty, sickness, disability, and old-age risks. The open-ended curriculum structure enables students to customize a curriculum to gain valuable insights into specific fields, such as small-business and social-enterprise development, corporate social responsibility, race and social justice, financial inclusion, and gender equality.

Required Concentration Courses

(students must take four of the following)

- Comparative Social Welfare Policy
- Cities in a Globalizing World
- Seminar in Urban Politics and Policy
- Comparative Urban Policy
- Governing the 21st-Century City
- Critical Issues in Urban Policy
- Urban and Social Policy
- Strategy, Community Partnerships, and Philanthropy
- Affordable Housing Development
- Strategic Management of Information and Communication Technologies for the Public Good
- Transforming the Urban Economy
- Public Finance
- Social Enterprise in Community and Economic Development

Environmental Policy and Sustainability Management

This concentration, coupled with the rigorous core curriculum, emphasizes integrated thinking and learning so that our graduates will see beyond linear and fragmented approaches to holistic planning for environmental sustainability. Graduates of this concentration will better understand the impact of human-induced environmental change and help to develop real-world solutions that sustainably manage human interaction with natural systems.

Required Concentration Courses

(students must take four of the following)

- Sustainability Management
- Decision Models and Management
- Sustainability Metrics
- Sustainable Operations
- Sustainability Technology and the Evolution of Smart Cities
- Global Environmental Markets
- Sustainability Communications Strategy and Reporting
- Financing Natural Infrastructure
- Sustainable Finance





CAREER PATHS

As public policy issues become larger and more complex, the global need for trained policy analysts and public managers is a critical one. SIPA EMPA graduates pursue careers in local, state, and federal government agencies dealing with public policy issues, and work as managers and staff analysts in nonprofit organizations, private corporations, banks, and consulting firms. Employers in the private and nonprofit sectors are attracted by the Executive MPA's rigorous program in quantitative and managerial analysis, coupled with a deep understanding of governmental processes.

Apple	Food Bank for New York City	KPMG	United Nations Development Programme (UNDP)
BlackRock	Goldman Sachs	McKinsey & Company	United Nations High Commissioner for Refugees (UNHCR)
Booz Allen Hamilton	Google	Moody's	United States Department of Defense
Central Intelligence Agency	Government of Colombia	Morgan Stanley	United States Department of State
Cleveland Indians Baseball	Government of India	New York City Economic Development Corporation	United States Department of the Treasury
Columbia Earth Institute	Government of Jersey City, N.J.	New York City Fire Department	World Bank
Con Edison	Innovations for Poverty Action	New York City Mayor's Office of Management and Budget	
Credit Suisse	International Finance Corporation	New York City Police Department	
Deloitte	International Peace Institute	New York State Office of the Governor	
Federal Bureau of Investigation	J.P. Morgan		
Federal Reserve Bank of New York			

SELECT FACULTY

1 William B. Eimicke is the founding director of the Picker Center for Executive Education and a professor in the practice of public affairs at SIPA. Eimicke teaches courses in public management, applied policy analysis, and management innovation.

2 Arvid Lukauskas is the executive director of the Picker Center for Executive Education and the MPA in Economic Policy Management program. Lukauskas teaches and conducts research on international and comparative political economy, with a focus on the political economy of finance and trade policy.

3 Steven A. Cohen is the senior vice dean of Columbia's School of Professional Studies and a professor in the practice of public affairs at SIPA. He is also the director of the MPA in Environmental Science and Policy program at SIPA, the director of the Master of Science in Sustainability Management at the School of Professional Studies, and the director of the Earth Institute's Research Program on Sustainability Policy and Management at Columbia.

4 Yumiko Shimabukuro is a lecturer in the discipline of international and public affairs at SIPA. She teaches courses that explore the intersection of political, economic, and social development.

5 Howard W. Buffett is an adjunct associate professor of international and public affairs and an adjunct research scholar at SIPA. He teaches management techniques for improving the effectiveness of foreign aid and global philanthropy.

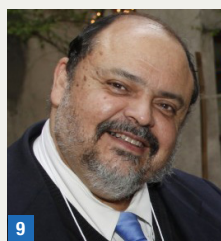
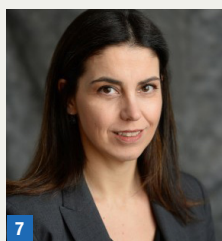
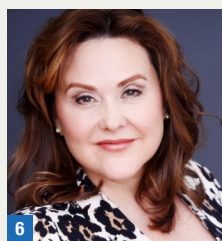
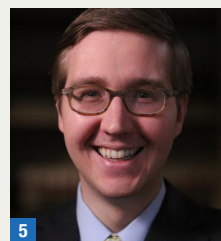
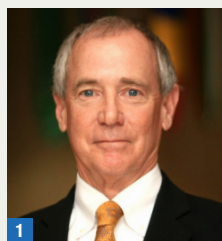
6 Joann Baney is an adjunct associate professor of international and public affairs at SIPA. She has taught courses in the EMBA program at Columbia Business School and in the University's Speech Department. She is the faculty director of the FDNY Officers Management Institute and is on the faculty of the NYPD's Police Management Institute.

7 Paola Valenti is a senior lecturer in the discipline of international and public affairs at SIPA. She is an economist with expertise in development economics, applied econometrics, applied microeconomics, and the economics of antitrust and intellectual property.

8 Basil Smikle is a lecturer in international and public affairs at SIPA. He is also the executive director of the New York State Democratic Party. His commentary on politics and public policy is regularly featured on TheHill.com and in other local and national media outlets.

9 Francisco Rivera-Batiz is an adjunct professor of international and public affairs at SIPA. He is currently a professor of economics and education at Teachers College and an affiliate professor at SIPA.

10 David Maurrasse is an adjunct associate professor in cross-sector community partnerships and development. He is also the founder and president of Marga Incorporated, a consulting firm providing strategic advisory services and research to philanthropic initiatives and community partnerships.



APPLYING

The application process can be completed online at apply.sipa.columbia.edu/apply.

APPLICATION REQUIREMENTS

For admission, applicants must satisfy the following criteria:

- Hold an undergraduate degree with a record of superior academic accomplishment. Transcripts should be scanned and uploaded to the application. If you are admitted to the program, official transcripts must be on file in order to register for classes.
- Demonstrate proficiency in the English language adequate for study at the master's level. We accept the TOEFL, the IELTS, and Pearson's PTE Academic scores as proof of proficiency in English for those applicants who did not earn a bachelor's degree from an institution in which English is the primary language of instruction.
- Demonstrate verbal and quantitative aptitude by taking the GRE or the GMAT. Applicants who have significant work experience and/or have performed well in previous quantitative courses may request a waiver from the EMPA Program Office.
- International students who require the F-1 student visa must take a full-time course load of four courses per semester.

INTERVIEWS AND CLASS VISITS

Prospective students are strongly encouraged to attend an info session and schedule an informational interview. Applicants are also invited to sit in on classes and speak with current students and faculty.

To visit a class, please register at sipa.columbia.edu/empa/class-visit. To see a list of the upcoming information sessions, please go to sipa.columbia.edu/empa/information-sessions.

DEADLINES

December 15

Spring admission and award deadline

March 31

Fall priority and award deadline

July 1

Final fall admission deadline

CONTACT

Valerie Zimmer

Picker Center | Columbia | SIPA
420 West 118th Street (Room 400)
New York, NY 10027
212-851-9550
empa@columbia.edu

sipa.columbia.edu/empa

